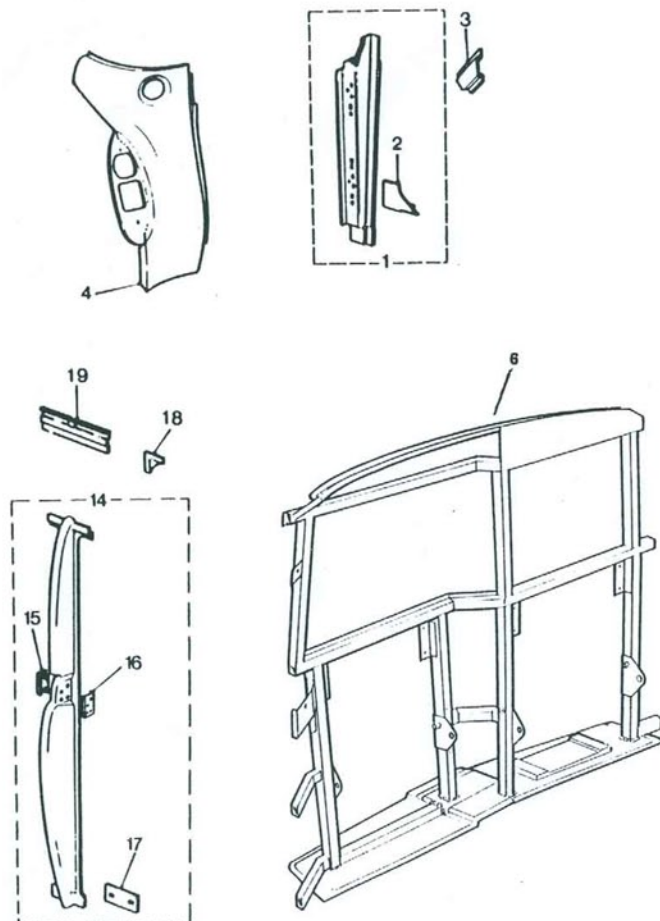


## LTI TAXI PARTS

A 08  
FICHE 3 OF 3

## B,C &amp; D POSTS, DIVISION &amp; REAR QUARTER



Illus.	Part No	Description	Qty	Remarks
1		Panel assembly-D post lower RH.....	1	
		Panel assembly-D post lower LH.....	1	
2		Bracket-attachment-lower seal RH.....	1	
		Bracket-attachment-lower seal LH.....	1	
		Pivot-checkstrap.....	2	
		Setscrew.....	4	
		Washer-plain.....	4	
3		Stiffener-lower-inner.....	2	
		Support assembly-D post to wheelarch RH.....	1	
		Support assembly-D post to wheelarch LH.....	1	
4		Panel assembly-rear quarter-RH.....	1	Fairway
		Panel assembly-rear quarter-RH.....	1	Fairway Driver onwards
		Panel assembly-rear quarter-LH.....	1	Fairway
		Panel assembly-rear quarter-LH.....	1	Fairway Driver
6		Division assembly.....	1	Fairway Bronze and Silver
		Division assembly.....	1	Fairway Gold
		Division assembly RHD.....	1	Fairway Driver onwards
		Division assembly-wheelchair LHD.....	1	Fairway Driver onwards
		Division assembly-straight LHD.....	1	Option
14		Panel assembly B and C post RH.....	1	Fairway
		Panel assembly B and C post RH.....	1	Fairway Driver & Fairway 95
		Panel assembly B and C post LH.....	1	Fairway
		Panel assembly B and C post LH (RHD).....	1	Fairway Driver & Fairway 95
		Panel assembly B and C post LH (LHD).....	1	Fairway Driver & Fairway 95
15		Plate-door lock striker-front.....	2	
16		Plate-door lock striker-rear.....	2	
17		Plate-stiffener-bottom-B and C post.....	2	
18		Corner-division-top.....	4	
19		Panel-inner-cantrail centre.....	2	